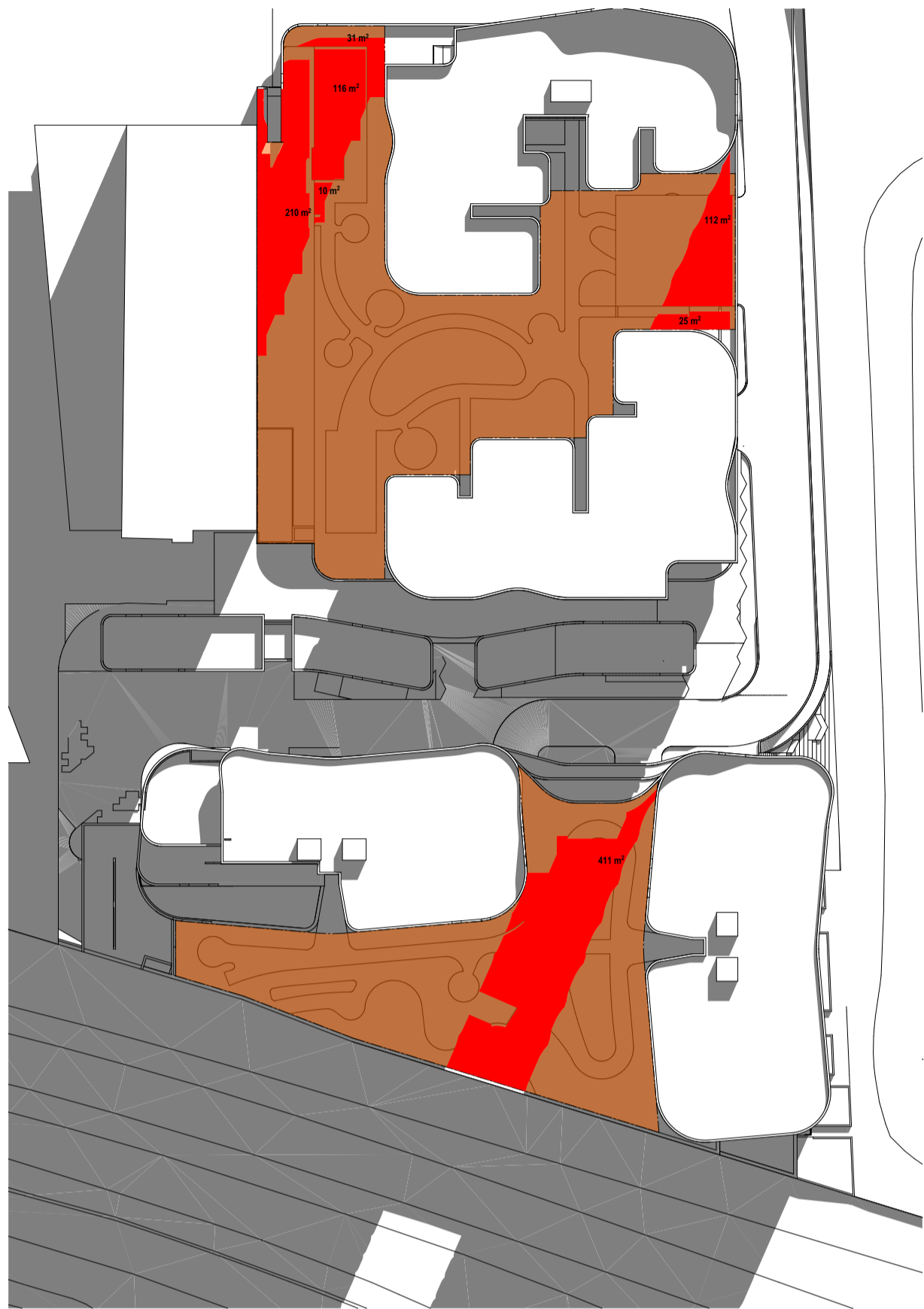
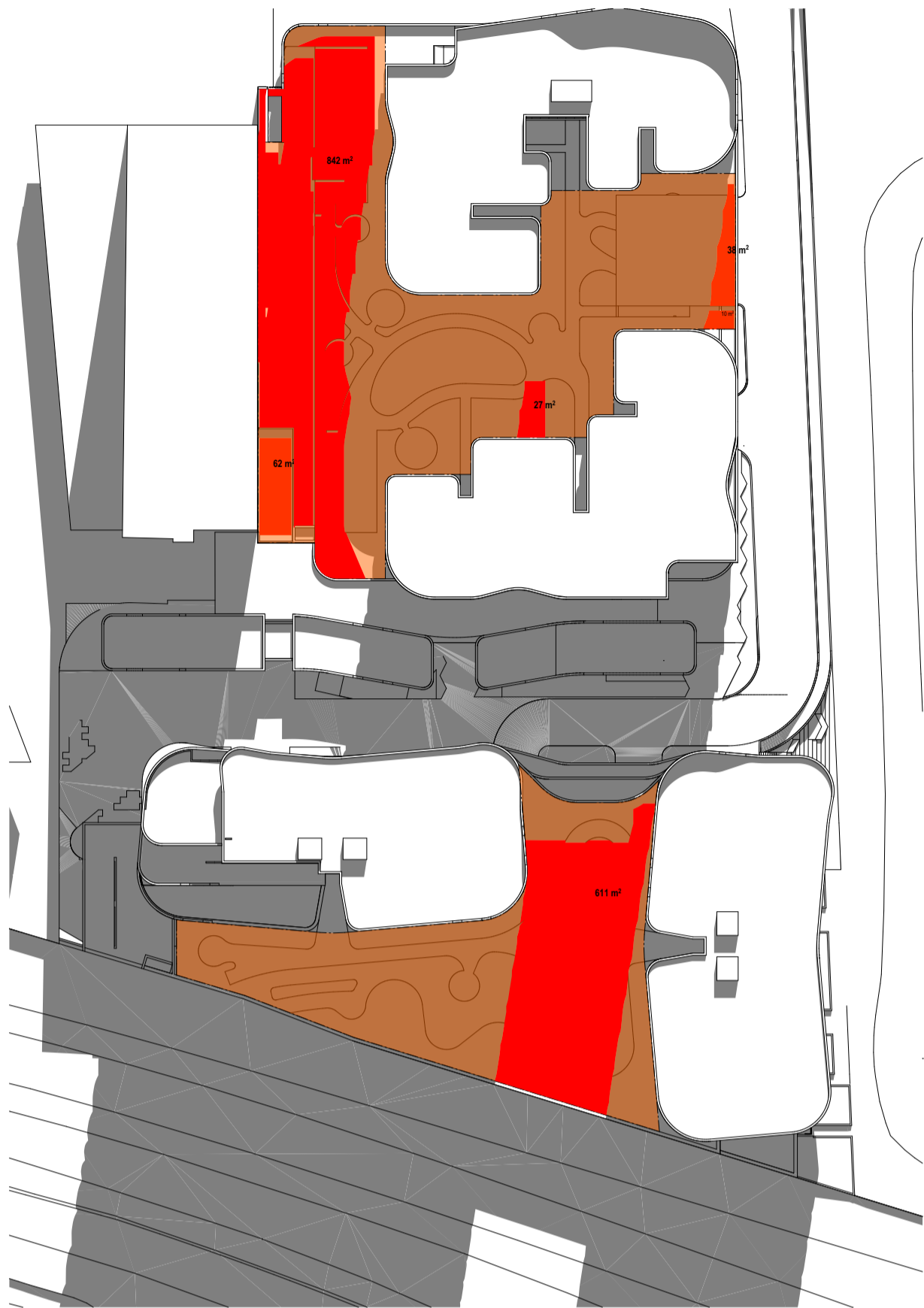


COS - Solar Study - 09.00      Percentage Common Open Space With Solar Access = 19%



COS - Solar Study - 10.00      Percentage Common Open Space With Solar Access = 27%



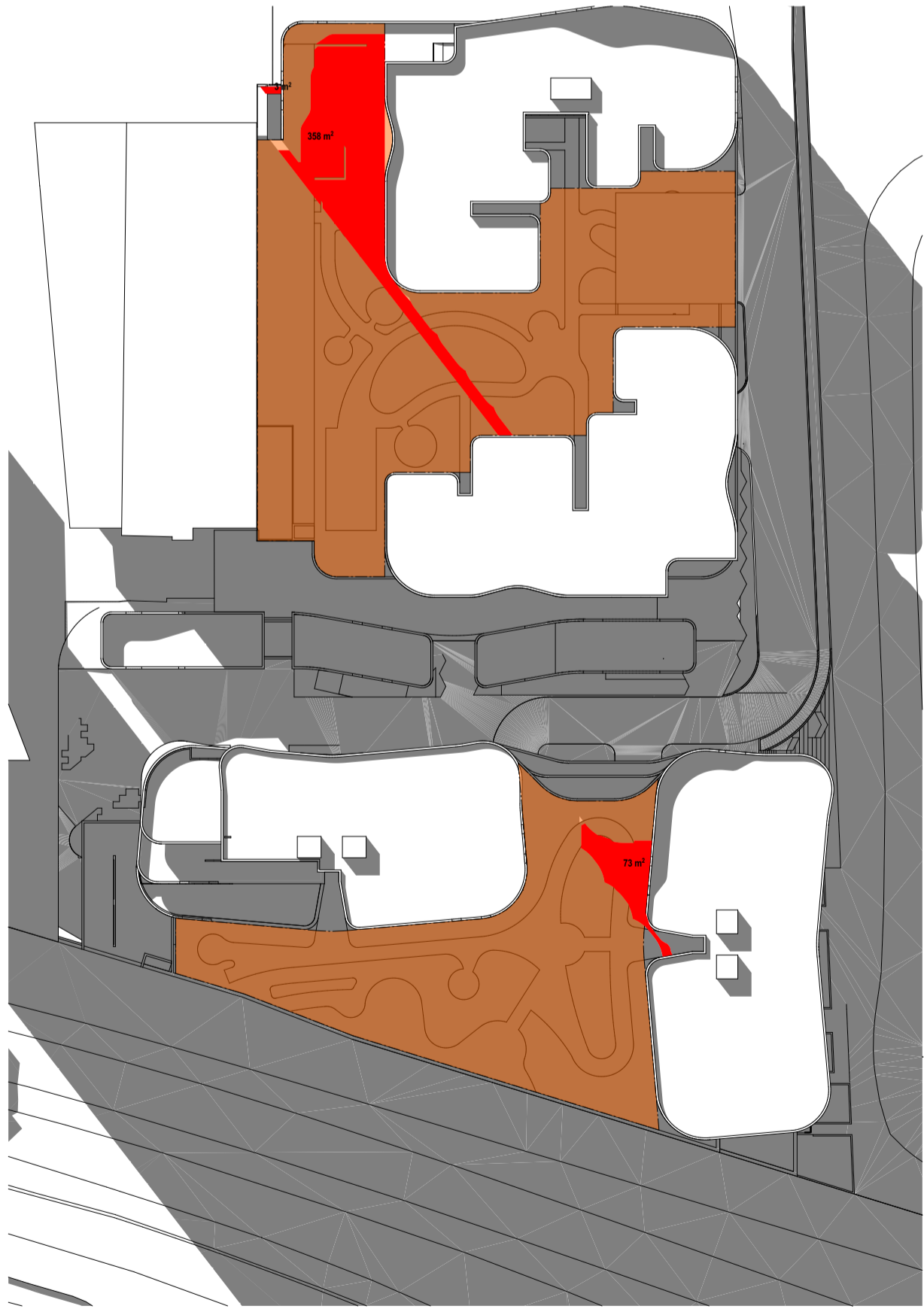
COS - Solar Study - 11.00      Percentage Common Open Space With Solar Access = 40%



COS - Solar Study - 12.00      Percentage Common Open Space With Solar Access = 41%



COS - Solar Study - 13.00      Percentage Common Open Space With Solar Access = 23%



COS - Solar Study - 14.00      Percentage Common Open Space With Solar Access = 10%



COS - Solar Study - 15.00      Percentage Common Open Space With Solar Access = 5%

COMMUNAL OPEN SPACE = 3823m<sup>2</sup>

COMMUNAL OPEN SPACE WITH SOLAR ACCESS (≈m<sup>2</sup>)

COMMUNAL OPEN SPACE UNDER SHADOW

REQUIRED SOLAR ACCESS TO COMMON OPEN SPACE

AT LEAST 50% OF THE REQUIRED COMMON OPEN SPACE IS TO RECEIVE 2 HOURS OF DIRECT SUNLIGHT BETWEEN 9 AM AND 3PM ON 21 JUNE.

© DKO Architecture (NSW) Pty Ltd  
Except as allowed under copyright act, no part of this drawing may be reproduced or otherwise dealt with without written permission of DKO Architecture.  
NSW Nominated Architects: Koso de Keijzer 2017 & David Randerson 8542  
Builder/Contractor shall verify job dimensions before any job commences.  
Figured dimensions take precedence over drawings and job dimensions.  
All shop drawings shall be submitted to the Architect/Consultant, and manufacture shall not commence prior to return of inspected shop drawings by the Architect/Consultant.

Rev.	Date	By	Ckd	Description
A	01.08.16	SO	NB	DA SUBMISSION

Client Details

**Fridcorp™**  
FRIDCORP  
Suite 6.06, 50 Holt Street  
Surry Hills 2010 NSW Australia  
www.fridcorp.com.au

Consultants

**Webber Design**  
Structural Engineers  
P\_0400 008 444  
paul@webberdesign.com

**Openwork**  
Landscape Architect  
mark@openwork.info

**slattery**  
Slattery  
Quantity Surveyor  
P\_02 9423 8850  
josh.cozen@slattery.com.au

**calibre**  
Civil Engineers  
P\_02 1234 5678  
carlo.bartolome@calibreconsulting.co

**TTTP**  
Traffic Consultant  
P\_0423 07146  
michael@tpp.net.au

**Affinity Fire**  
Fire Engineers  
P\_0499 977 502  
toddyer@affinity-eng.com

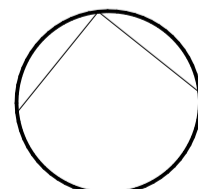
**mecone**  
Planning Consultant  
P\_02 8607 5668  
acburn@mecone.com  
khattlett@mecone.com

**EMF**  
Building Service Cons.  
P\_02 9411 5360  
jorgenk@emf.com.au

**BCA**  
BCA Consultant  
P\_02 9411 5360  
sboyce@bcalogic.com.au

**WOODS BAGOT**  
Woods Bagot  
Interior Design  
P\_0292492500  
alan.mcneilshon@woodsbagot.com

DKO Architecture (NSW) Pty Ltd  
119 Redfern St  
Redfern NSW 2016  
T +61 3 8346 4500  
info@DKO.com.au  
www.DKO.com.au  
ABN: 81956706590

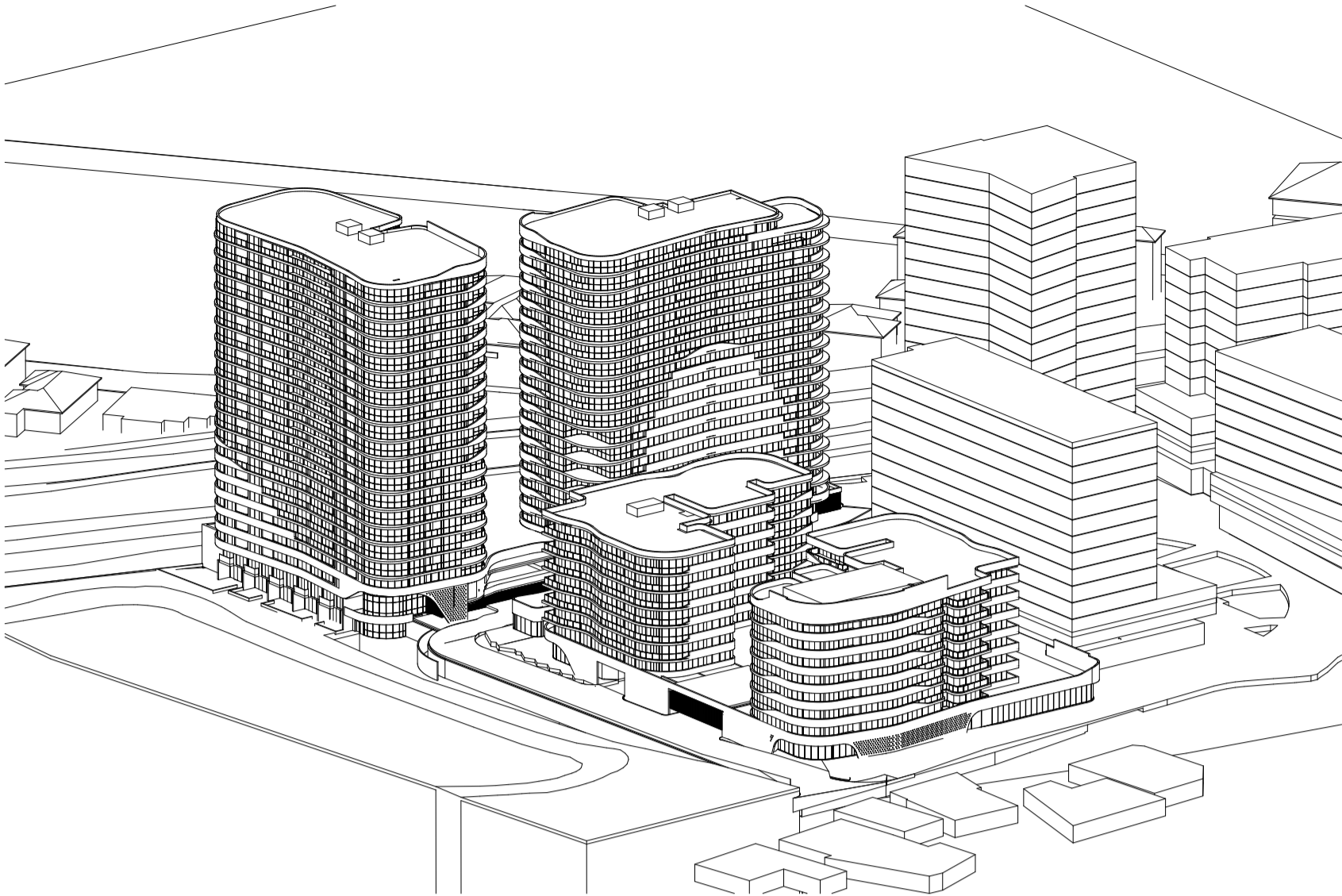


Project Name	Hurstville
Project Number	11336
Project Address	93 Forest Road, Hurstville, NSW 2220

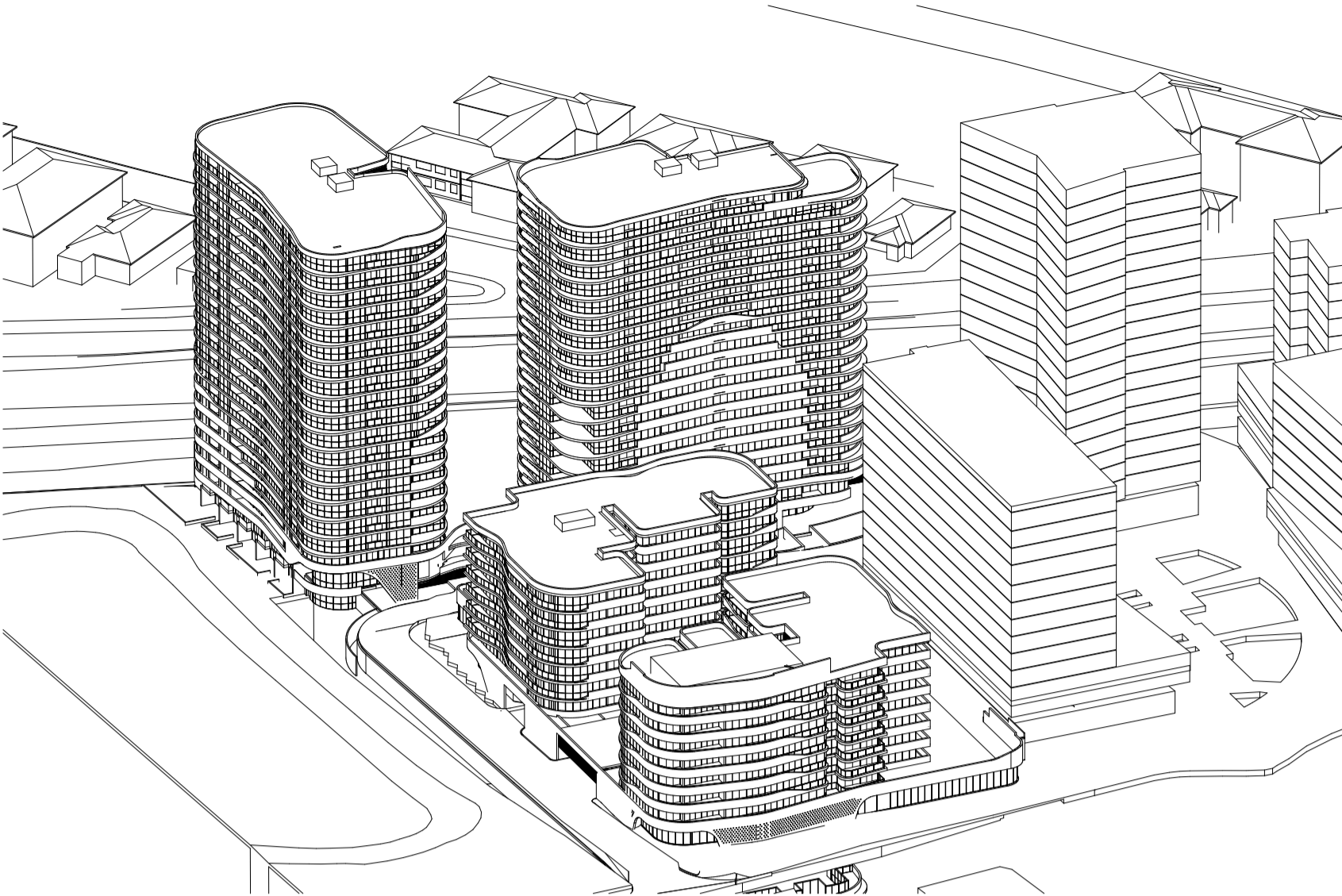
Drawn By	SO
Checked By	NB
Date	10/02/2017
Scale	1:800 @A1

Drawing Series	Shadow & Solar Analysis
Drawing Name	Communal Open Space Shadow Diagrams

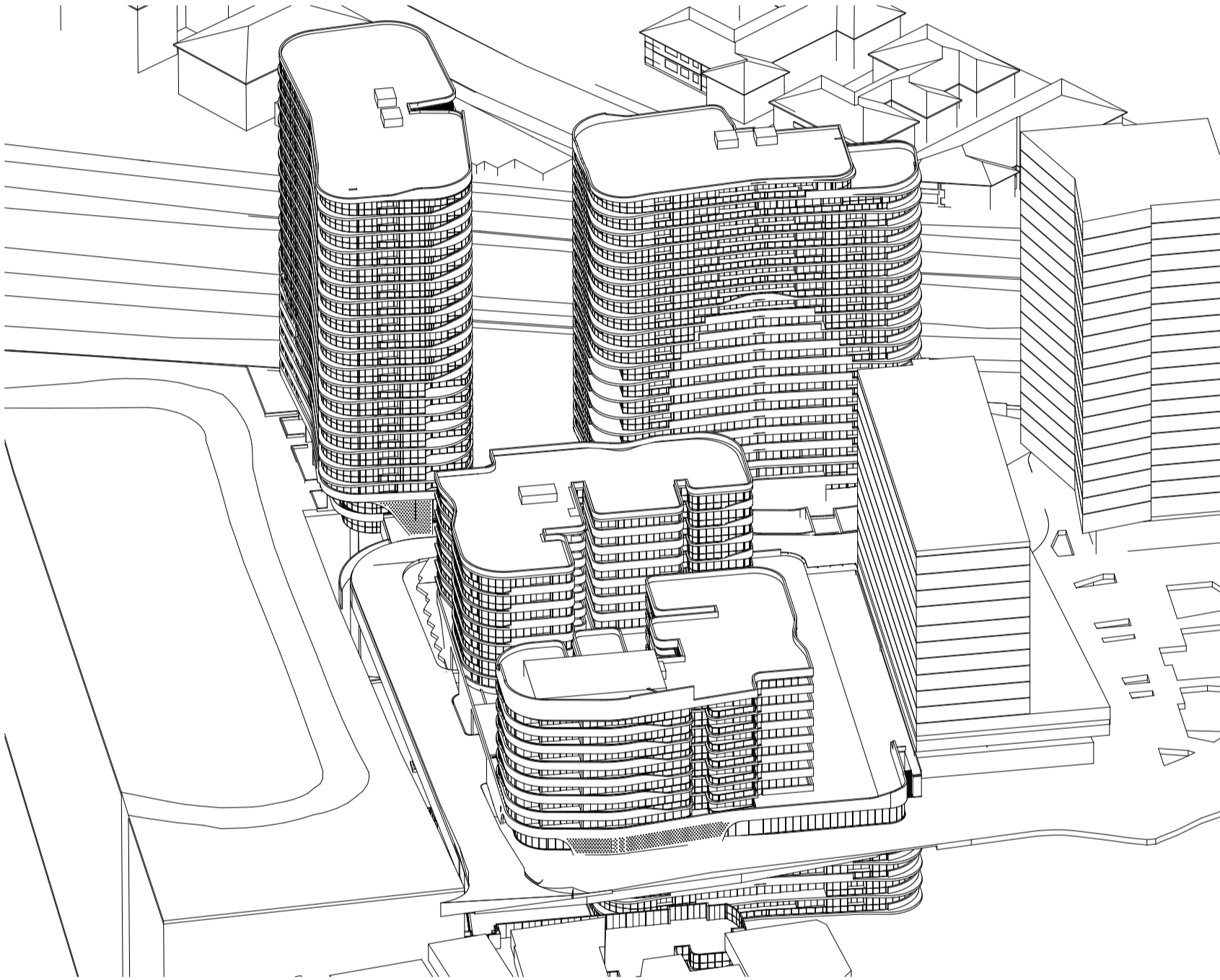
Drawing Number **DA5001**  
Revision



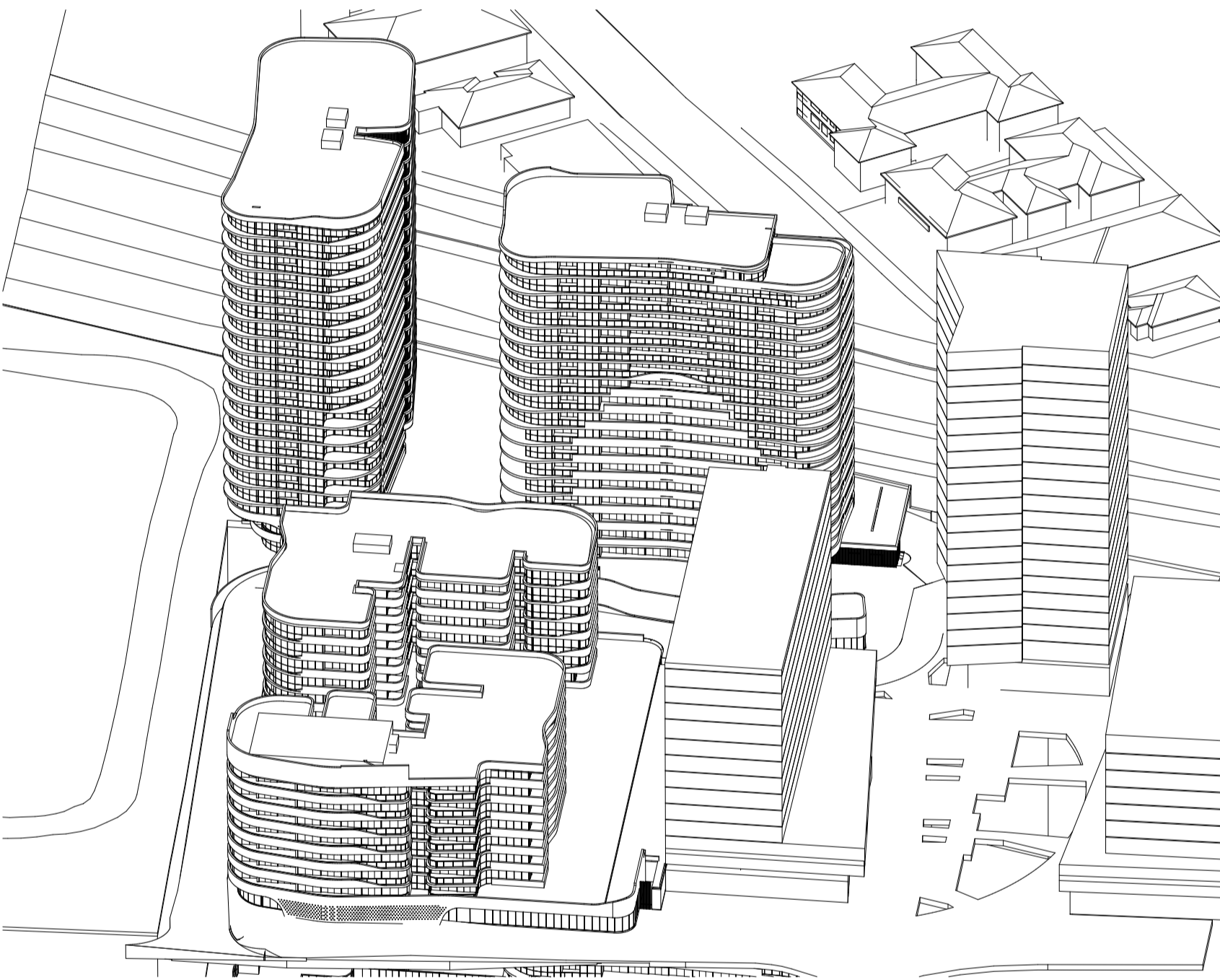
Eye of the Sun - 09.00



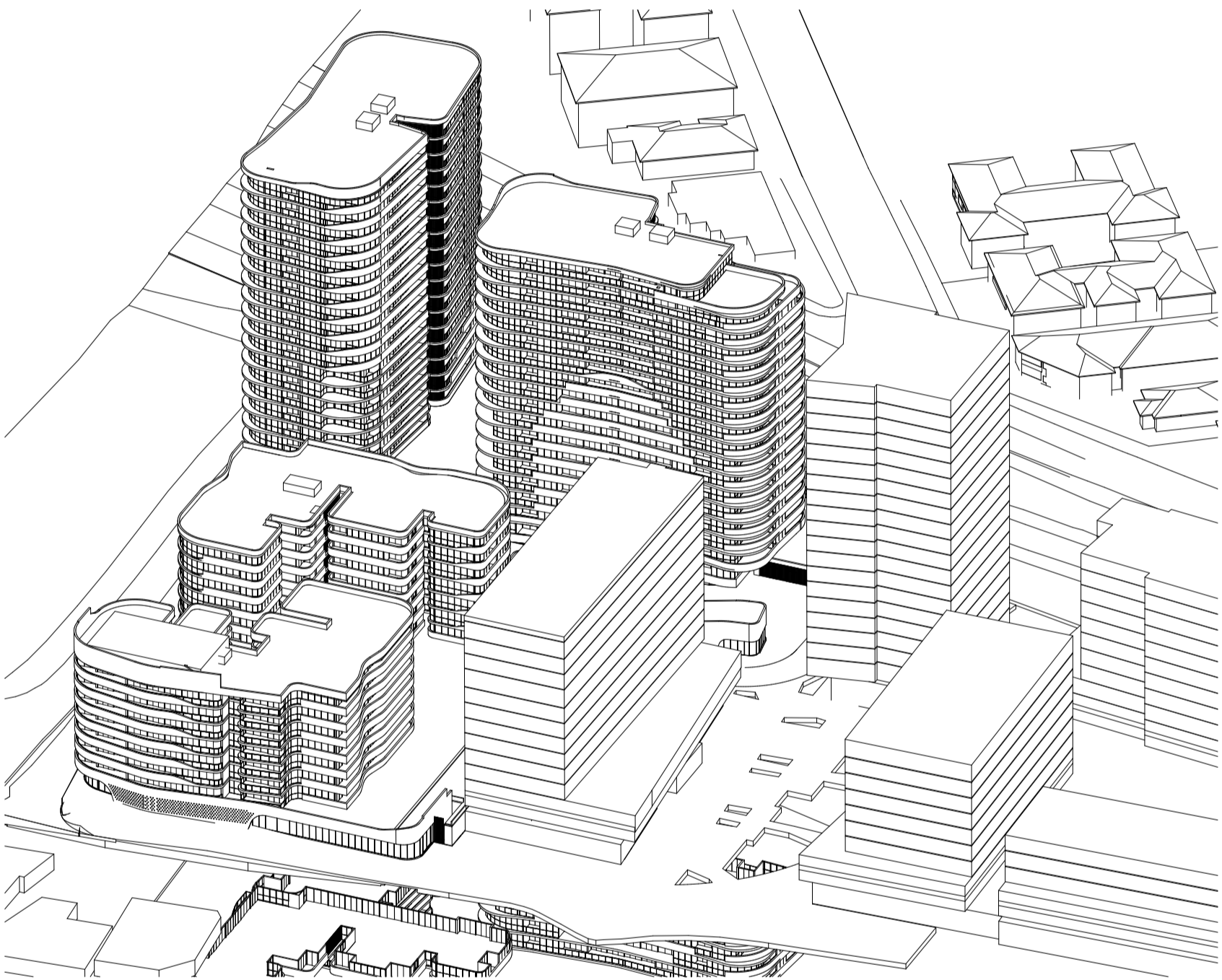
Eye of the Sun - 10.00



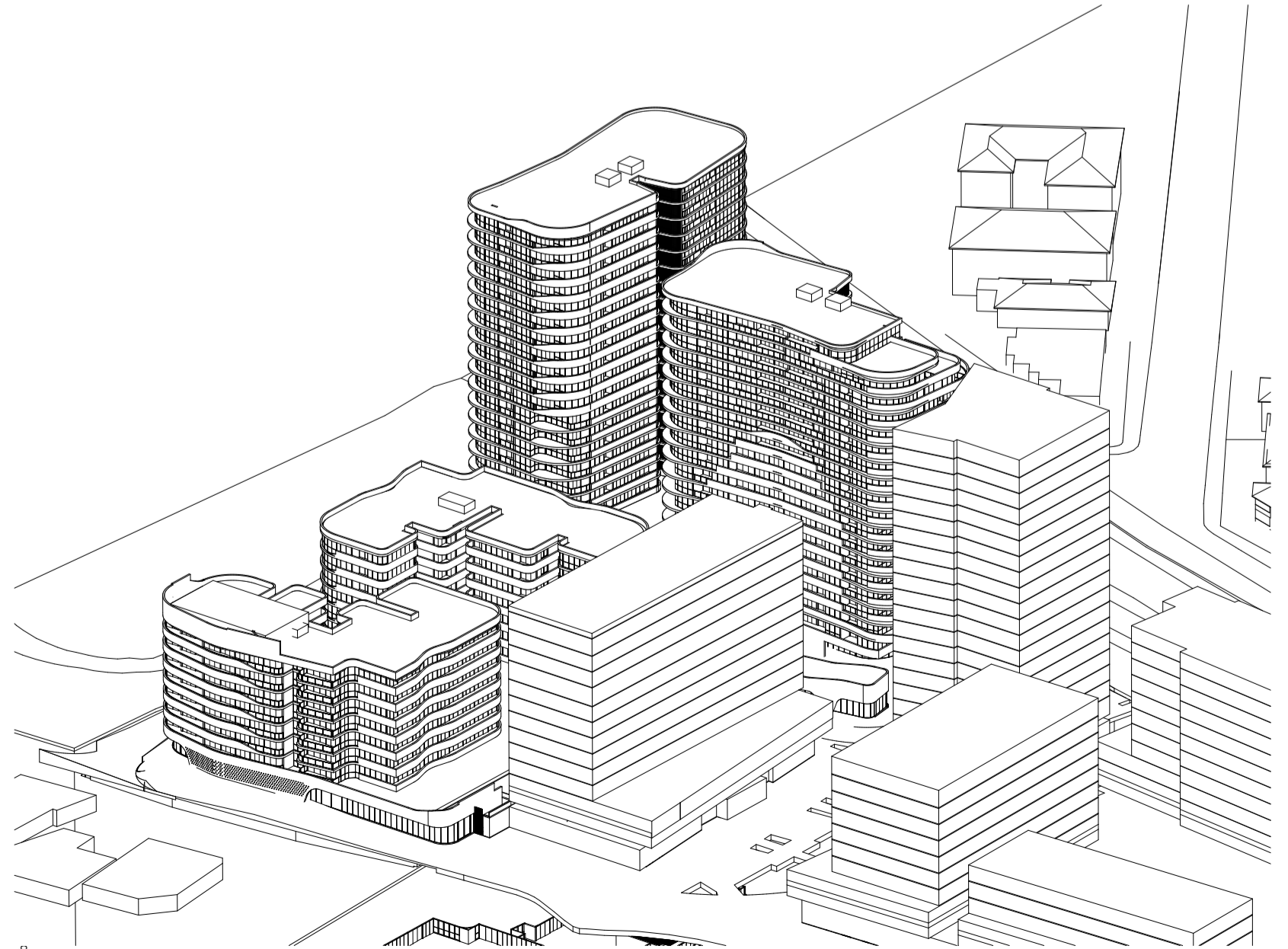
Eye of the Sun - 11.00



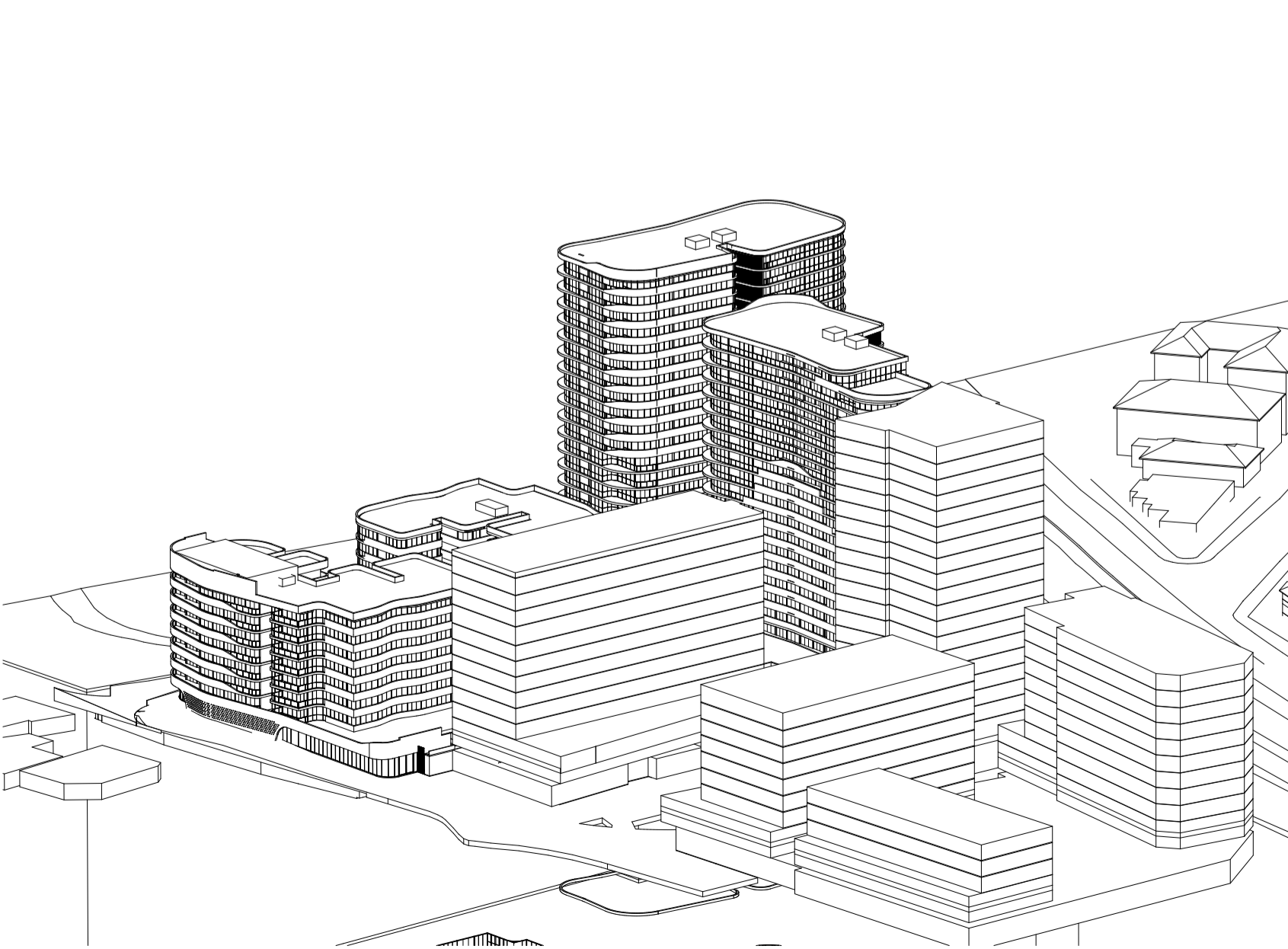
Eye of the Sun - 12.00



Eye of the Sun - 13.00



Eye of the Sun - 14.00



Eye of the Sun - 15.00

Printed: Friday, 10 Feb

© DKO Architecture (NSW) Pty Ltd  
Except as allowed under copyright act, no part of this drawing may be reproduced or otherwise dealt with without written permission of DKO Architecture.  
NSW Nominated Architects: Koso de Keijzer 1987 & David Randerson 8542  
Builder/Contractor shall verify job dimensions before any job commences.  
Figured dimensions take precedence over drawings and job dimensions.  
All shop drawings shall be submitted to the Architect/Consultant, and manufacture shall not commence prior to return of inspected shop drawings by the Architect/Consultant.

Rev.	Date	By	Ckd	Description
A	01.08.16	SO	NB	DA SUBMISSION

Client Details

**Fridcorp™**

FRIDCORP  
Suite 6.06, 50 Holt Street  
Surry Hills 2010 NSW Australia  
www.fridcorp.com.au

Consultants



Webber Design  
Structural Engineers  
P. 0400 008 444  
paul@webberdesign.com

OPENWORK

Openwork  
Landscape Architect  
mark@openwork.info

slattery

Slattery  
Quantity Surveyor  
P. 02 9423 8850  
josh.coxen@slattery.com.au



Calibre  
Civil Engineers  
P. 02 1234 5678  
carlo.bartolome@calibreconsulting.co



TTPP  
Traffic Consultant  
P. 0420107146  
michael@tpp.net.au



Affinity Fire  
Fire Engineers  
P. 0499 977 202  
toddyer@affinity-eng.com



Mecone  
Planning Consultant  
P. 02 8607 8668  
acoburn@mecone.com  
khattlett@mecone.com



EMF  
Building Service Cons.  
P. 02 9283 8445  
jorgenk@emf.com.au



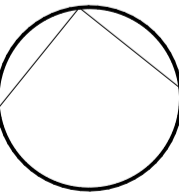
BCA Logic  
BCA Consultant  
P. 02 9411 5360  
sboyce@bcalogic.com.au



Woods Bagot  
Interior Design  
P. 0292492500  
alan.mcmahon@woodsbagot.com

**DKO**

DKO Architecture (NSW) Pty Ltd  
119 Redfern St  
Redfern NSW 2016  
T +61 3 8346 4500  
info@DKO.com.au  
www.DKO.com.au  
ABN: 81956706590



Project Name	Hurstville
Project Number	11336
Project Address	93 Forest Road, Hurstville, NSW 2220
Drawn By	SO
Checked By	NB
Date	10/02/2017
Scale	@A1

Drawing Series	Shadow & Solar Analysis
Drawing Name	Proposed Eye of the Sun

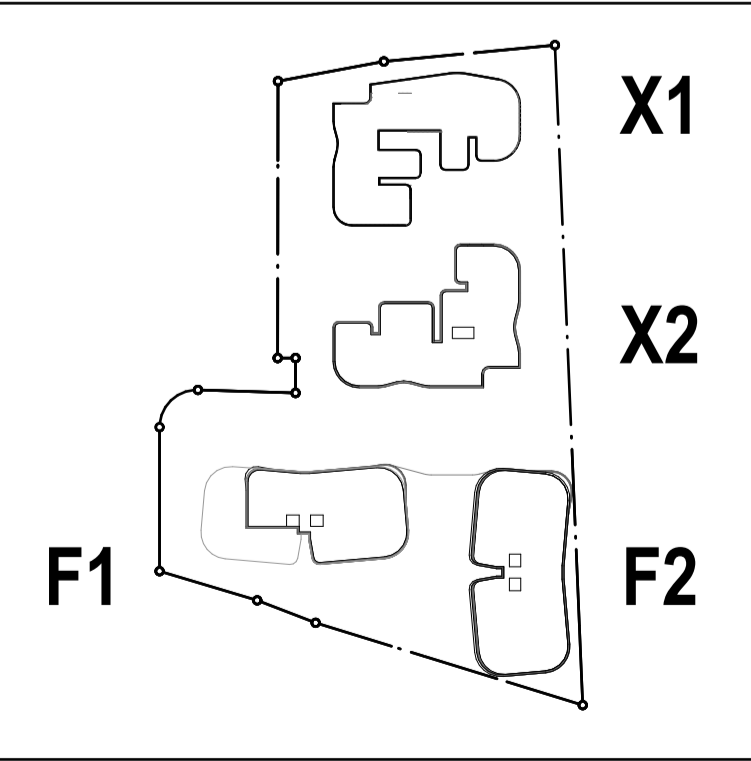
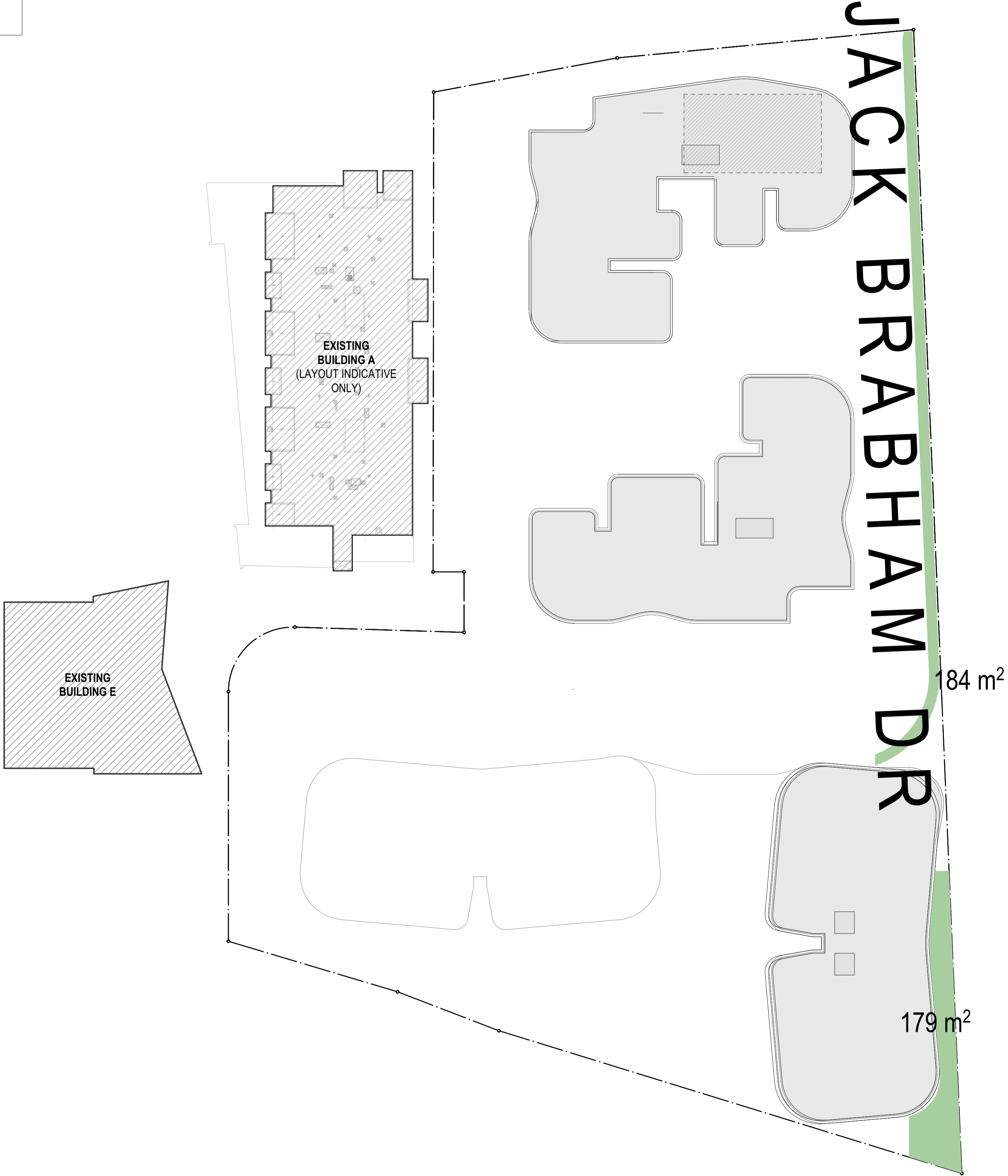
Drawing Number **DA5002**  
Revision



Deep Soil Zones

REQUIRED= 10% | ACHIEVED = 2.6%  
[FOR ENTIRE DEVELOPMENT]

REQUIRED AREA = 1393m<sup>2</sup>  
ACHEIVED AREA = 363m<sup>2</sup>



Identification Plan  
1:2000

© DKO Architecture (NSW) Pty Ltd  
Except as allowed under copyright act, no part of this drawing may be reproduced or otherwise dealt with without written permission of DKO Architecture.

Builder/Contractor shall verify job dimensions before any job commences  
Figured dimensions take precedence over drawings and job dimensions.  
All shop drawings shall be submitted to the Architect/Consultant, and manufacture shall not commence prior to return of inspected shop drawings by the Architect/Consultant

Rev.	Date	By	Ckd	Description
A	01.08.16	SO	NB	DA SUBMISSION

Client Details



FRIDCORP  
Suite 6.06, 50 Holt Street  
Surry Hills 2010 NSW Australia  
www.fridcorp.com.au

Consultants

Webber Design  
Structural Engineers  
P\_0400 008 444  
paul@webberdesign.com

Openwork  
Landscape Architect  
mark@openwork.info

Slattery  
Quantity Surveyor  
P\_02 9423 8850  
josh.coxen@slattery.com.au

Calibre  
Civil Engineers  
P\_02 1234 5678  
carlo.bartolome@calibreconsulting.co

TTTP  
Traffic Consultant  
P\_0400 007 145  
michael@tpp.net.au

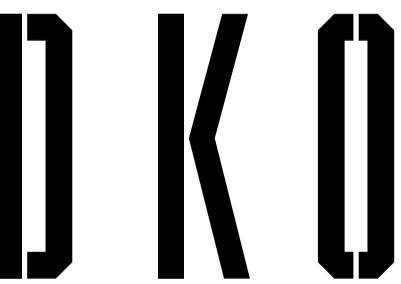
Affinity Fire  
Fire Engineers  
P\_0499 977 202  
todwyer@affinity-eng.com

Mecone  
Planning Consultant  
P\_02 8607 5668  
acoburn@mecone.com  
kbartlett@mecone.com

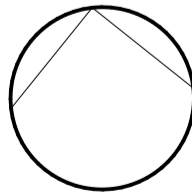
EMF  
Building Service Cons.  
P\_02 9283 8445  
jorgenk@emf.com.au

BCA Logic  
BCA Consultant  
P\_02 9411 5360  
sboyce@bcalogic.com.au

Woods Bagot  
Interior Design  
P\_0292492500  
alan.mcmaish@woodsbagot.com



DKO Architecture (NSW) Pty Ltd  
C19/38-48 Macarthur Street  
Ultimo, NSW 2007  
T +61 3 8346 4500  
info@DKO.com.au  
www.DKO.com.au  
ABN: 81956706590



Project Name	Hurstville
Project Number	11336
Project Address	93 Forest Road, Hurstville, NSW 2220
Drawn By	SO
Checked By	NB
Date	10/02/2017
Scale	1:400 @A1

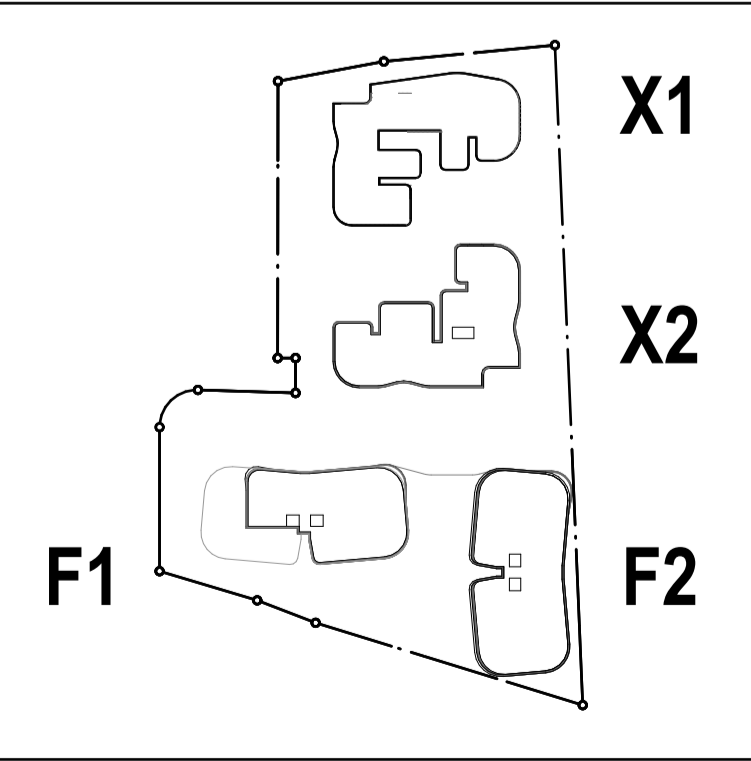
Drawing Series	Calculations
Drawing Name	Deep Soil Zones

Drawing Number **DA6006**  
Revision

Communal Open Space

REQUIRED= 25% | ACHIEVED = 29%  
[FOR ENTIRE DEVELOPMENT]

REQUIRED AREA = 3482m<sup>2</sup>  
ACHEIVED AREA = 4048m<sup>2</sup>



© DKO Architecture (NSW) Pty Ltd  
Except as allowed under copyright act, no part of this drawing may be reproduced or otherwise dealt with without written permission of DKO Architecture.  
Builder/Contractor shall verify job dimensions before any job commences  
Figured dimensions take precedence over drawings and job dimensions.  
All shop drawings shall be submitted to the Architect/Consultant, and manufacture shall not commence prior to return of inspected shop drawings by the Architect/Consultant

Rev.	Date	By	Ckd	Description
A	01.08.16	SO	NB	DA SUBMISSION

Client Details

**Fridcorp™**  
FRIDCORP  
Suite 6.06, 50 Holt Street  
Surry Hills 2010 NSW Australia  
www.fridcorp.com.au

Consultants

**Webber Design**  
Structural Engineers  
P\_0400 008 444  
paul@webberdesign.com

**Openwork**  
Landscape Architect  
mark@openwork.info

**Slattery**  
Quantity Surveyor  
P\_02 9423 8850  
josh.coxen@slattery.com.au

**Calibre**  
Civil Engineers  
P\_02 1234 5678  
carlo.bartolome@calibreconsulting.co

**The Transport Planning Partnership Pty Ltd**  
Traffic Consultant  
P\_040307146  
michael@tpp.net.au

**Affinity Fire**  
Fire Engineers  
P\_0499 977 202  
todwyer@affinity-eng.com

**Mecone**  
Planning Consultant  
P\_02 8607 9668  
acoburn@mecone.com  
kbartlett@mecone.com

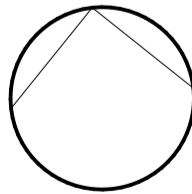
**EMF Griffiths**  
Building Service Cons.  
P\_02 9283 8445  
jorgenk@emf.com.au

**BCA Logic**  
BCA Consultant  
P\_02 9411 5360  
sboyce@bcalogic.com.au

**WOODS BAGOT**  
Woods Bagot  
Interior Design  
P\_0292492500  
alan.mcmaish@woodsbagot.com

**DKO**

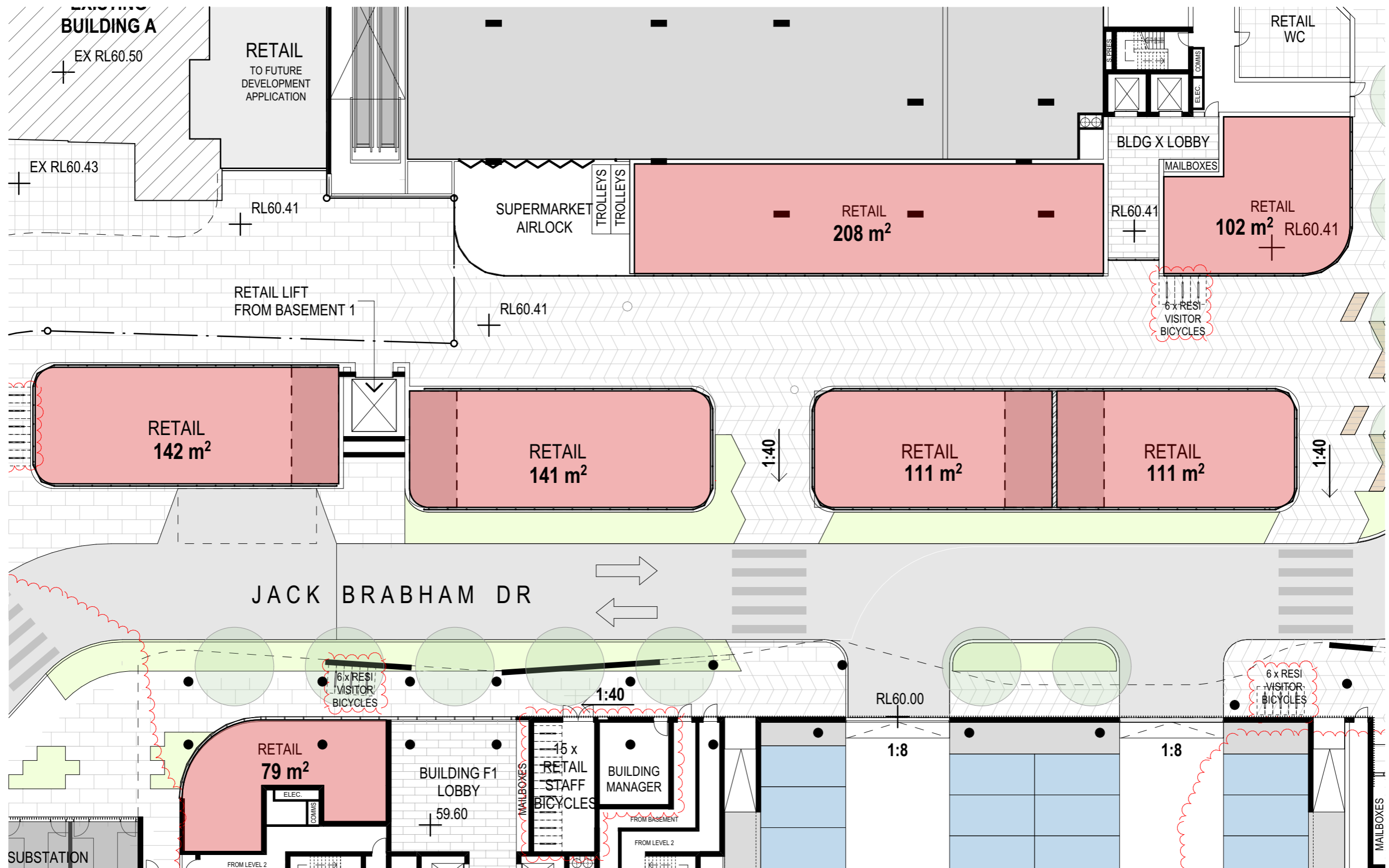
DKO Architecture (NSW) Pty Ltd  
C19/38-48 Macarthur Street  
Ultimo, NSW 2007  
T +61 3 8346 4500  
info@DKO.com.au  
www.DKO.com.au  
ABN: 81956706590



Project Name	Hurstville
Project Number	11336
Project Address	93 Forest Road, Hurstville, NSW 2220
Drawn By	SO
Checked By	NB
Date	10/02/2017
Scale	1:400 @A1

Drawing Series	Calculations
Drawing Name	Communal Open Space

Drawing Number **DA6007**  
Revision



**TOTAL RETAIL NLA - 894m<sup>2</sup>**